

**Diaphragm seal - Type 7392 -
DRD-connection - Hygienic Process Conditions**



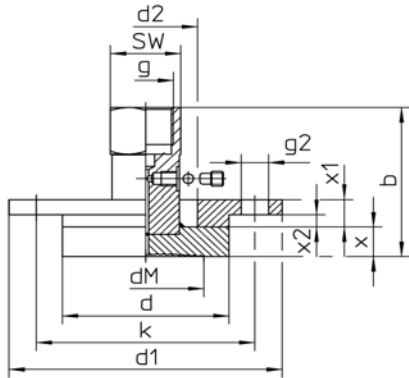
- **FLUSH WELDED DIAPHRAGM OF STAINLESS STEEL 1.4435 (316L)**
- **DRD-CONNECTION WITH ATTACHMENT FLANGE OF STAINLESS STEEL 1.4435 (316L)**
- **PREFERRED APPLICATION BY LEVEL MEASURING**
- **CIP- UND SIP-COMPATIBLE**
- **MOUNTING TO MANOMETER AND PRESSURE TRANSMITTER**

TECHNICAL DATA

General information	
Process connection	DRD-Anschluss DN 50 with attachment flange, Type MDM 7392
Basic body	stainless steel 1.4435 (316L)
Separating diaphragm	stainless steel 1.4435 (316L), welded, other materials on request
Nominal pressure	PN 40
Minimum pressure range	1 bar (for Manometer)
Instrument connection	standard: G ½ DIN EN 837-1 optional: directly welded
Filling liquid	standard: paraffin oil, with FDA approval, others filling liquid on request
Max. cleaning temperature	+ 150 °C (+302 °F), (for the complete pressure measuring system with pressure gauge NCS 100 (4") mounted, other versions on request)
Options	
Separating diaphragm	stainless steel 1.4435 (316L), electropolished
Installation	- via cooling element - via capillary line (please specify the length by ordering)
Certificates	material certificate 3.1, EN 10204 for medium contacted parts
Accessories/mounting parts	
	weld-in flange, for DRD-connection, stainless steel ZEF/DRD
	sealing washers for DRD-connection, EPDM ZDE
	sealing washers for DRD-connection, Viton ZDV
	sealing washers for DRD-connection, Gore-TEX ZDG
	4 fixing screw M 10 X 25 DIN 933, stainless steel ZDS

DIMENSIONAL DRAWINGS

Diaphragm seal type 7392 with attachment flange:

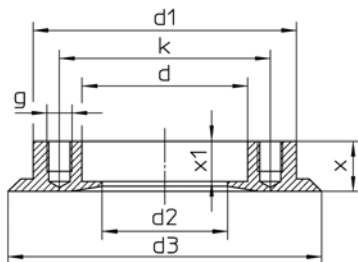


Dimensions (mm/inches) and Weight (kg/lb), Minimum Pressure Ranges (MPR)¹⁾

Model	DN	PN (psi)	b	d	d1	d2	dM	g	g2	k	SW	x	x1	x2	MPR	Weight (approx.)
MDM 7392 DRD	50	40	61	65	105	40	46	G ½"	4 x	84	27	12	11	5	0-1 bar	0,90
		580	2.4	2.56	4.13	1.57	1.81	½"	10,5	3.31	1.06	.47	.43	.2	0 – 15 psi	1.98
								BSP	.41							

¹⁾ Valid for pressure gauge NCS 100 (4"); also valid corresponding vacuum and vacuum/pressure compound ranges.
 Data for other pressure measuring instruments on request.

Accessory: weld-in flange



Dimensions (mm/inches) and Weight (kg/lb)

d	d1	d2	D3	g	x	x1	Weight (approx.)
66	105	50	125	4X M10	20	16	0,95
2.6	4.13	1.97	4.92	.39	.79	.63	2.09

Our products are constantly in further development, therefore subjects to modifications.