

**Diaphragm Seal - Type 7340 -**  
**Clamp-connection - Hygienic Process Conditions**



- **FLUSH WELDED DIAPHRAGM OF STAINLESS STEEL 1.4435 (316L)**
- **FOR FOOD AND BEVERAGE INDUSTRY, BIOTECHNOLOGY, PHARMACY**
- **RESIDUES-FREE CLEANING OF MEASURING POINT, CIP- AND SIP-COMPATIBLE**
- **MOUNTING TO MANOMETER AND PRESSURE TRANSMITTER**



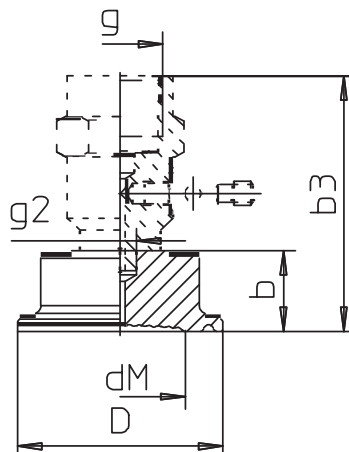
**TECHNICAL DATA**

<b><u>General information</u></b>	
Process connection	Clamp quick release lock acc. to ISO 2852, DIN 32676 and Tri-Clamp, <b>Type MDM 7340</b>
Basic body	stainless steel 1.4435 (316L)
Separating diaphragm	stainless steel 1.4435 (316L), welded, other materials on request
Nominal pressure	PN 25 to PN 40, dependent on model and nominal size
Minimum pressure range	manometer: dependent on model and nominal size minimum pressure ranges and PN (see tables) pressure range of other measurement instruments on request
Instrument connection	standard: G ½ DIN EN 837-1
Filling liquid	standard: paraffin oil, with FDA approval, others filling liquid on request
Max. cleaning temperature	+ 150 °C (+302 °F), (for the complete pressure measuring system with pressure gauge NCS 100 (4") mounted, other versions on request)
<b><u>Options</u></b>	
Separating diaphragm	stainless steel 1.4435 (316L), electropolished
Installation	- via cooling element - via capillary line (with upper part welded)
Certificates	material certificate 3.1, EN 10204 for medium contacted parts (please specify the length by ordering)

# Diaphragm Seal - Type 7340 - Clamp-connection - Hygienic Process Conditions

## DIMENSIONAL DRAWINGS

Diaphragm Seals with clamp-connection:



### MDM 7340v... ISO 2852 for tubes according to ISO 2037 and BS 4825

DN mm	PN	For tube male-Ø x wall thickness	tube female- Ø	b	b3	D	dM	d*	g	g2	Minimum measuring span	t <sub>k</sub> - value	Weight (approx.) vd8 vG½	
25	16/40	25 x 1.2	22.6	20	63	50.5	21	23	G ½	Ø 8	0 - 4 <sup>2)</sup>	5.50	0.19	0.32
38		38 x 1.2	35.6				32	34			0 - 1 <sup>2)</sup>	1.40		
51		51 x 1.2	48.6				64	46			48	0 - 1 <sup>1)</sup>	0.45	0.31
63.5	10/25	63.5 x 1.6	60.3	20	63	77.5	56	58	G ½	Ø 8	0 - 1 <sup>1)</sup>	0.90	0.40	0.53
76.1		76.1 x 1.6	72.9				91	66			68	0 - 0,6 <sup>1)</sup>	0.73	0.63

### MDM 7340.1v...DIN 32 676, Series A for tubes according to DIN 11 850

DN	PN	For tube male-Ø x wall thickness	tube female- Ø	b	b3	D	dM	d*	g	g2	Minimum measuring span	t <sub>k</sub> - value	Weight (approx.) vd8 vG½	
15	16/40	19 x 1.5	16	20	63	34	16	18	G ½	Ø 8	0 - 4 <sup>3)</sup>	9.00	0.07	0.20
20		23 x 1.5	20				17	19			0 - 4 <sup>3)</sup>	7.50		
25		29 x 1.5	26			50.5	24	26			0 - 2.5 <sup>2)</sup>	3.60	0.19	0.32
32		35 x 1.5	32				28	30			0 - 2.5 <sup>2)</sup>	2.30		
40	41 x 1.5	38	64	46	48	0 - 1 <sup>2)</sup>	1.40	0.37	0.50					
50	53 x 1.5	50		91	60	62	0 - 1 <sup>1)</sup>			0.45	0.37	0.50		
65	10/25	70 x 2	66	20	63	106	72	75	G ½	Ø 8	0 - 0,6 <sup>1)</sup>	0.84	0.63	0.76
80		85 x 2	81				106	72			75	0 - 0,6 <sup>1)</sup>	0.64	0.92

### MDM 7340.6v...Tri Clamp for tubes according to DIN 11 850

NPS	DN <sup>4)</sup>	PN	For tube male-Ø x wall thickness		For tube female-Ø		b	b3	D	dM	d*	g	g2	Minimum measuring span	t <sub>k</sub> - value	Weight (approx.) vd8 vG ½	
			BS 4825 and O.D.-tube / ASME BPE	ISO 1127	BS 4825 and O.D.-tube / ASME BPE	ISO 1127										vd8	vG ½
¾"	20	16/40	19.05 x 1.2	26.9 x 1.6	16.65	23.7	20	63	25.4	16	18	G ½	Ø 8	0 - 4 <sup>3)</sup>	9.00	0.05	0.18
1"	25		25.4 x 1.6	33.7 x 2	22.2	29.7			50.5	21	23			0 - 4 <sup>2)</sup>	5.50	0.2	0.33
1½"	38		38.1 x 1.6	42.4 x 2	34.8	38.4			64	30	32			0 - 2.5 <sup>2)</sup>	1.80		
2"	51		50.8 x 1.6	48.3 x 2	47.5	44.3			77.5	52	54			0 - 1 <sup>2)</sup>	0.80	0.32	0.45
2½"	63.5	10/25	63.5 x 1.6	60.3 x 2	60.3	56.3	20	63	91	66	68	G ½	Ø 8	0 - 1 <sup>1)</sup>	0.95	0.45	0.58
3"	76.1		76.2 x 1.6	76.1 x 2	73.0	72.1								91	66	68	0 - 0.6 <sup>1)</sup>

<sup>1)</sup> for bourdon tube pressure gauges NCS 100

<sup>2)</sup> for bourdon tube pressure gauges RCh / RChG 100-3 without limit switch contact assembly

<sup>3)</sup> for bourdon tube pressure gauges RCh / RChG 63-3 without limit switch contact assembly

<sup>4)</sup> for BS 4825 and ISO 1127

\* = external diameter diaphragm