

Diaphragm Seals - Type 73.. - Sanitary Connections Design - Hygienic Process Conditions



- **FLUSH WELDED DIAPHRAGM OF STAINLESS STEEL 1.4435 (316L)**
- SPECIAL MATERIALS ON REQUEST -
- **SANITARY CONNECTIONS DESIGN**
DIN 11851, SMS UND IDF
- UNION NUT OR MALE THREAD -
- **RESIDUES-FREE CLEANING OF MEASURING POINT, CIP- AND SIP-COMPATIBLE**
- **MOUNTING TO MANOMETER AND PRESSURE TRANSMITTER**
- **FOR FOOD AND BEVERAGE INDUSTRY, BIOTECHNOLOGY, PHARMACY**

EXAMPLE OF OPERATION:
Type 7310 and 7375



TECHNICAL DATA

<u>General information</u>	
Process connection	Type 7310: conical sleeve with union nut DIN 11851 Type 7315: male thread DIN 11851 Type 7325: APV-ISS male thread Type 7370: conical sleeve with hexagon union nut acc. SMS-Norm Type 7375: SMS male thread
Basic body	stainless steel 1.4435 (316l)
Separating diaphragm	stainless steel 1.4435 (316L), welded, other materials on request
Nominal pressure	to DN 40 or 2" = PN 40 from DN 50 or 2 ½" = PN 25
Minimum pressure range	dependent on model, see tables
Instrument connection	standard: G ¼ or G ½ acc. DIN EN 837-1 optional: directly welded
Filling liquid	standard: paraffin oil, with FDA approval, others filling liquid on request
Max. cleaning temperature	+ 150 °C (+302° F) (for the complete pressure measuring system with pressure gauge NCS 100 (4") mounted, other versions on request)
<u>Options</u>	
Separating diaphragm	stainless steel 1.4435 (316L), electropolished
Installation	- via cooling element - via capillary line (please specify the length by ordering)
Certificates	material certificate 3.1, EN 10204 for medium contacted parts
<u>Accessories/ mounting parts</u>	
	(please order separately) EPDM sealing (other on request)

DIMENSIONAL DRAWINGS

Diaphragm Seals with union nut:

Fig. A

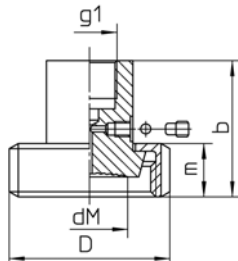
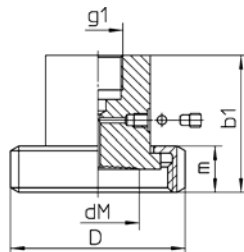


Fig. B



Dimensions (mm/inches) and Weight (kg/lb), Minimum Pressure Ranges (MPR)¹⁾

Model	DN	PN (bar/psi)	D	dM	b	m	g1	MPR	Weight (approx.)
MDM 7310 DIN 11 851 Fig. A	25	40 580	63 2.48	28 1.1	54 2.13	21 .83	G ½ ½" BSP	0 - 2,5 bar 0 - 30 psi	0,50 1.10
	32		70 2.76	34 1.34				48 1.89	0 - 1 bar 0 - 15 psi
	40		78 3.07	38 1.5	22 .87				
	50	25 360	92 3.62	46 1.81	54 2.13	25 .98		1,10 2.43	
	65		112 4.41	52 2.05				30 1.18	2,00 4.41
	80		127 5	72 2.83	59 2.32	30 1.18		0 - 0,6 bar 0 - 10 psi	2,55 5.62
MDM 7370 SMS Fig. B	1"	40 580	51 2.01	24 .94	55,5 2.19	20 .79	G ½ ½" BSP	0 - 2,5 bar 0 - 30 psi	0,22 .49
	1½"		74 2.91	34 1.34	57 2.24	25 .98		0 - 1 bar 0 - 15 psi	0,60 1.32
	2"		84 3.31	46 1.81	62 2.44	26 1.02			1,00 2.20
	2½"	25 360	100 3.94	52 2.05	61 2.40	30 1.18		1,30 2.87	
	3"		114 4.49	72 2.83	66 2.6	32 1.26		0 - 0,6 bar 0 - 10 psi	2,00 4.41

¹⁾ Valid for pressure gauge NCS 100 (4"); also valid corresponding vacuum and vacuum/pressure compound ranges. Data for other pressure measuring instruments on request.

Diaphragm seals with male thread:

Fig. C

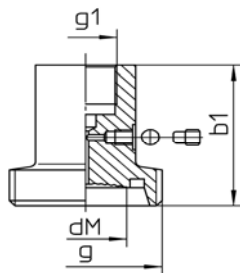


Fig. D

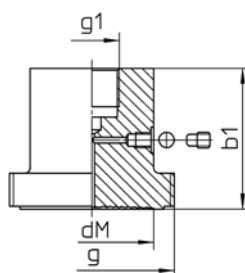
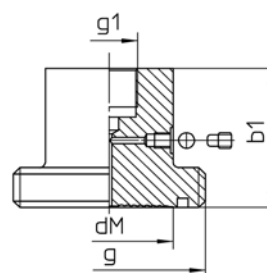


Fig. E



Dimensions (mm/inches) and Weight (kg/lb), Minimum Pressure Ranges (MPR)¹⁾:

Model	DN	PN	dM	b1	g	g1	MPR	Weight (approx.)
MDM 7315 DIN 11 851 Fig. C	25	40 580	26 1.02	55 2.17	Rd 52 x 1/6	G 1/2 1/2" BSP	0 - 2,5 bar 0 - 30 psi	0,35 .77
	32		30 1.18		Rd 58 x 1/6			0,50 1.10
	40		34 1.34		Rd 65 x 1/6			0,70 1.54
	50	25 360	46 1.81		Rd 78 x 1/6			0,90 1.98
	65	59 2.32	Rd 95 x 1/6		1,95 4.30			
MDM 7325 APV-ISS Fig. D	1 1/2"	40 580	34 1.34	1 63/64"	0 - 1 bar 0 - 15 psi	0,80 1.76		
	2		45 1.77	2 17/32"		0,95 2.09		
MDM 7375 SMS Fig. E	1 1/2"	40 580	34 1.34	Rd 60 x 1/6	0,80 1.76			
	2		45 1.77	Rd 70 x 1/6	0,95 2.09			

¹⁾ Valid for pressure gauge NCS 100 (4"); also valid corresponding vacuum and vacuum/pressure compound ranges. Data for other pressure measuring instruments on request.

Our products are constantly in further development, therefore subjects to modifications.