

## Diaphragm Seal - Type 7590 - for pulp and paper industries



- **FLUSH WELDED DIAPHRAGM OF STAINLESS STEEL 1.4435 (316L)**
- **PARTICULARLY SUITABLE FOR APPLICATIONS IN PULP AND PAPER INDUSTRIES**
- **FOR AGGRESSIVE MEDIA SUITED**
- **MOUNTING TO MANOMETER, PRESSURE SWITCHES AND PRESSURE TRANSMITTER**

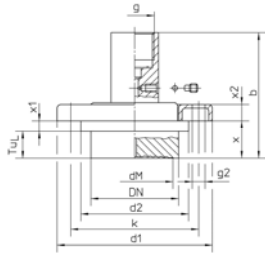
### TECHNICAL DATA

<b>General information</b>	
Process connection <b>DN 48</b>	extended diaphragm with extension tube and loose attachment flange, <b>Type MDM 7590</b> extension tube length L=15 mm (.59"), optional 6,5 mm (.26")
Basic body incl. extension tube	stainless steel 1.4435 (316L)
Separating diaphragm	stainless steel 1.4435 (316L), welded, other materials on request
Attachment flange	Stainless steel moulding, 6 holes Ø 7 mm (.28"), hole circle Ø 70 mm (2.76")
Nominal pressure	PN 40 (600 lb/sq.in.)
Minimum pressure range	dependent on model, see tables
Instrument connection	standard: G ½ DIN EN 837-1
Filling liquid	standard: paraffin oil, others filling liquid on request
Reference temperature	+ 20 °C (+ 68 °F)
<b>Options</b>	
Installation	connection 90° quadrant pipe or 90° quadrant pipe with vibration damper
	- via cooling element - via capillary line (please specify the length by ordering)
Certificates	material certificate 3.1, EN 10204 for medium contacted parts

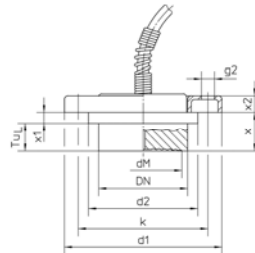
**DIMENSIONAL DRAWINGS**

**Diaphragm Seals with pulp connection:**

**Standard-Version**  
Direct mounting

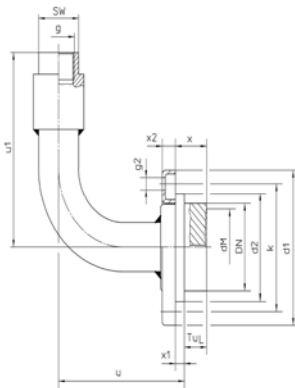


**Option**  
Capillary line

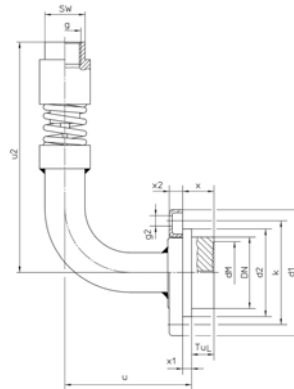


**Options:**

90 ° quadrant pipe



90 ° quadrant pipe with vibration damper (for pressure gauges < NCS 100 (4") only)



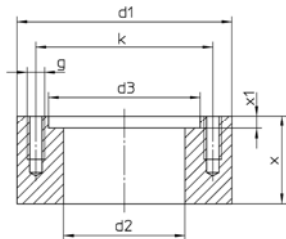
**Dimensions (mm/inches) and Weight (kg/lb)**

Extension Tube TuL	DN	b $\pm$ 2	d1	d2	dM	g	g2	k $\pm$ 2	u $\pm$ 1	u1 $\pm$ 1	u2 $\pm$ 1	x	x1	x2	SW	Weight (approx.) <sup>1)</sup>
15 mm .59"	48 (1.89")	66 2.6	85 3.35	59 2.32	38 1.5	G 1/2 female 1/2" BSP-f	6 x $\phi$ 7 6 x $\phi$ .28	70 2.76	81 3.19	107 4.21	157 6.18	21 .83	6 .24	9 .35	27 1.06	0.72
6,5 mm 2.6"		57.5 2.26										12.5 .49				0.40

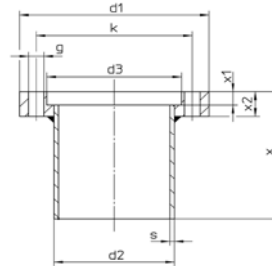
<sup>1)</sup> standard version, direct mounting

**Welding Counter Flanges**

Massive



With pipe welding socket



Dimensions (mm/inches) and Weight (kg/lb)

Version:	d1	d2	d3	g	g2	k	s	x	x1	x2	Weight (approx.)
massive	85	48,5	59,5	6 x M6	-	70	-	35	5	-	1,00
	<b>3.35</b>	<b>1.91</b>	<b>2.34</b>				<b>2.76</b>		<b>1.38</b>	<b>.2</b>	
With pipe welding socket		54	60,4	-	6 x ø7		2	55	7	12	0,40
		<b>2.13</b>	<b>2.38</b>		<b>6 x ø .28</b>		<b>.08</b>	<b>2.17</b>	<b>.28</b>	<b>.47</b>	<b>.88</b>

Our products are constantly in further development, therefore subjects to modifications.