

# Diaphragm Seal - Type 7410 - screw-in thread DIN 3852, 1/2" BSP to 2" BSP



- FLUSH WELDED DIAPHRAGM OF STAINLESS STEEL 1.4435 (316L)
- FOR HIGH PRESSURE MEASURING SUITABLE
- SIMPLE MOUNTING VIA SCREW-IN THREAD DIN 3852  
- 1/2" BSP TO 2" BSP -
- MOUNTING TO MANOMETER AND PRESSURE TRANSMITTER

## TECHNICAL DATA

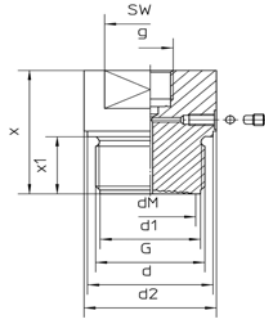
<b>General information</b>	
Process connection	screw-in thread DIN 3852, <b>Type MDM 7410</b> 1/2" BSP <sup>1)</sup> 3/4" BSP 1" BSP 1 1/2" BSP 2" BSP
Basic body	stainless steel 1.4571
Separating diaphragm	stainless steel 1.4435 (316L), other materials on request
Nominal pressure	PN 600 (10.000 lb/sq.in.)
Minimum pressure range	see tables
Instrument connection	1/4" BPS or 1/2" BSP female DIN EN 837-1 (see tables)
Filling liquid	standard: paraffin oil, others filling liquid on request
Max. cleaning temperature	+ 150 °C (+302 °F), (for the complete pressure measuring system with pressure gauge NCS 100 (4") mounted, other versions on request)
<b>Options</b>	
Separating diaphragm	stainless steel 1.4435 (316L), electropolished
Installation	- via cooling element - via capillary line (please specify the length by ordering)
Certificates	material certificate 3.1, EN 10204 for medium contacted parts

<sup>1)</sup> Pressure gauges: nom. sizes 40 (1 1/2") or 63 mm (2 1/2") can be attached only

# Diaphragm Seal - Type 7410 - screw-in thread DIN 3852, ½" BSP to 2" BSP

## DIMENSIONAL DRAWINGS

Diaphragm seal  
with threaded process connection:



Male thread ½" BSP up to 2" BSP

Required sealing:  
Gasket acc. to  
DIN 3852 form A  
(not part of standard supply)

Dimensions (mm/inches) and Weight (kg/lb), Minimum Pressure Ranges (MPR)<sup>1) 2)</sup>:

Model	G	PN	d	d1	D2	dM	g	x	x1	SW	MPR	Weight (approx.)	
MDM 7410	G ½ B <sup>3)</sup> ½" BSP <sup>3)</sup>	600 10.000 lb/sg.in	–	18 0.71	–	16 0.63	G ¼ female ¼" BSP-f	55 2.17	20 0.79	27 1.06	0 – 10 bar 0 – 160 psi	0,160 .35	
	G ¾ B ¾" BSP		32 1.26	22 0.87		20 0.79		56 2.20		32 1.26		0,270 .60	
	G 1 B 1" BSP		39 1.54	29 1.14		28 1.10	G ½ female ½" BSP-f	55 2.17	21 0.83	41 1.61	0 – 6 bar 0 – 100 psi	0,400 0.88	
	G 1½ B 1½" BSP		55 2.17	44 1.73		58 2.28		38 1.50	65 2.56	30	50 1.97	0 – 1, 6 bar 0 – 30 psi	1,080 2.38
	G 2 B 2" BSP		68 2.68	56 2.20		78 3.07		46 1.81	70 2.76	1.18	65 2.56	0 – 1 bar 0 – 15 psi	1,950 4.3

<sup>1)</sup> Valid for pressure gauge nom. size 63 mm (2½") and 40 mm (1½"); also valid corresponding vacuum and vacuum/pressure compound ranges.

<sup>2)</sup> Minimum pressure ranges for pressure transmitters and others on request

<sup>3)</sup> Pressure gauges: nom. sizes 40 (1½") or 63 mm (2½") can be attached only

Our products are constantly in further development, therefore subjects to modifications.